

NEW TECHNOLOGY

with proven effect in the scientific community and in practice

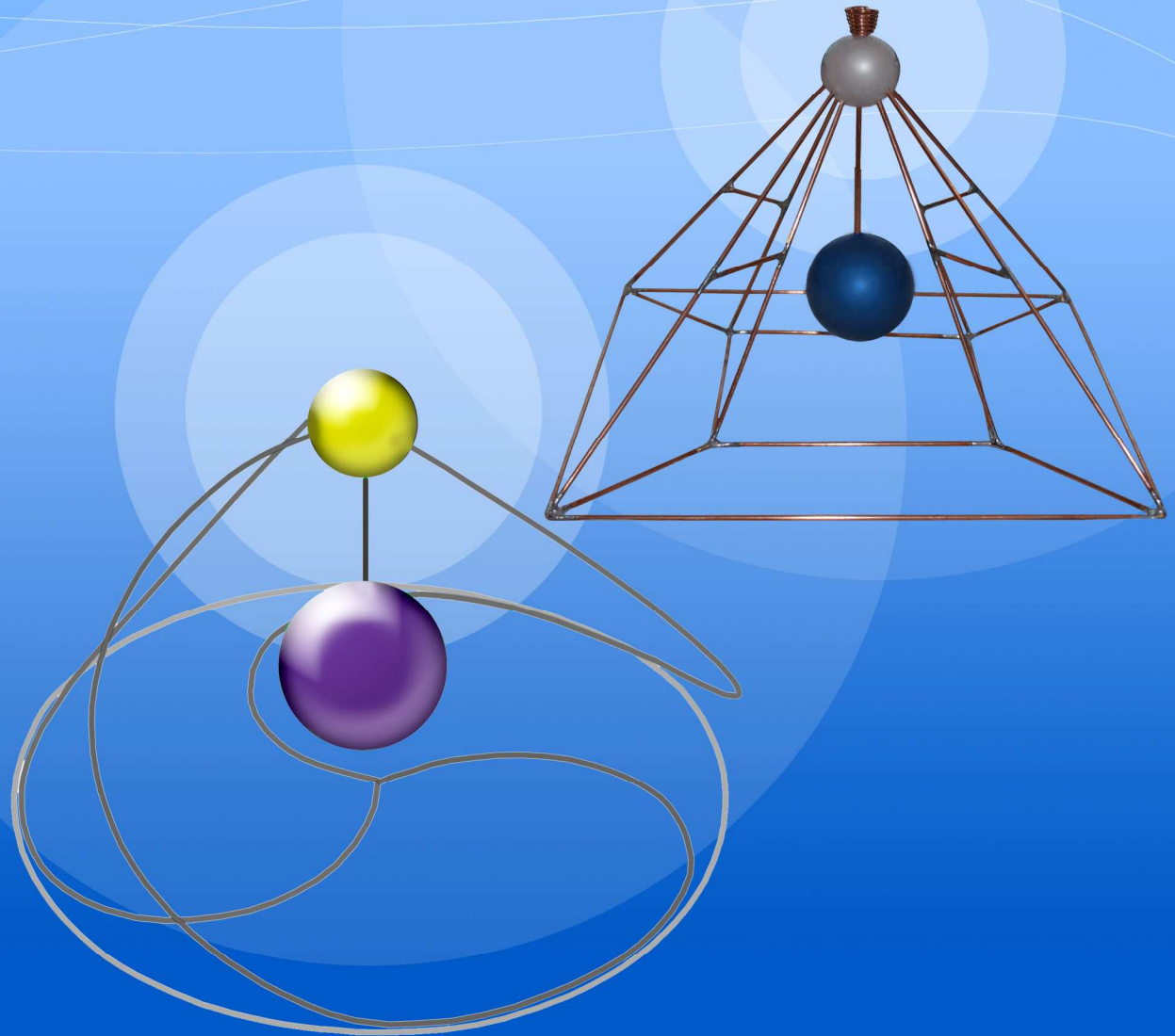
Energy Concentration Device (ECD)

Vladimir Selishchev
Vasily Goch

Patent 36232
Russian Federation

Patent 007760
Patent 008673
The Eurasian Patent Organisation
(EAPO)

Patent 24168
Ukraine



sales contacts

Russia
selichtchev@yandex.ru

Australia
sufelcentre@gmail.com

The inventors

Vladimir Selishchev



the Inventor, graduated from the Moscow State Technical University in 1972, attaining a PhD in Engineering, with a specialisation in automatic transmission.

In 1985 he began studying the field of bio-energy or vitalism. In 1992 Vladimir completed his medical degree.

In 1992 he began his work on the Energy Concentration Device, and has continued to develop the ECD through research and experimentation ever since. The positive effect of the Energy Concentration Device on spheres such as industry, environment and health has been highly regarded throughout international scientific communities.

Through extensive testing and application, the ECD has been shown to successfully achieve higher productivity in such areas as fish farming, poultry farming, egg production and dairy farming.

His method of reducing the air pollution-causing emissions produced by automobiles and improving motor efficiency, showed the following results:

- 21.4% less carbon monoxide emissions
- 13.7% less hydrocarbon emissions
- 5.5% less petrol usage (at a speed of 40-60km/h)

The ECD has also been successfully used in kindergartens, schools, hospitals, factories and sports complexes.

Vladimir Selishchev is the author of more than 100

Vassily Goch

has a PhD in Medical and Technical Sciences, Informational Energy Sciences and Biosciences.

He is the author of 272 scientific papers, 17 of which are patented inventions in the field of medicine, biology and psychology, 57 monographs on the theory of Causality, physics and chronology of time, philology and linguistics.

Vassily Goch is a creator and head of the International Scientific School of Causality.

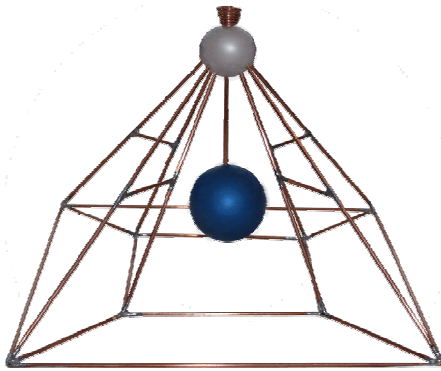
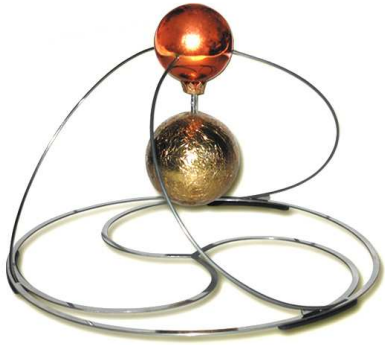
Has won numerous awards and prizes.



How the ECD works?

The Energy Concentration Device (ECD) accumulates energy from the surrounding diameter of 25 to 50 metres (depending on the size of the device), transforms it and then transmits it back - creating a zone of high positive energy, which is more favourable for any living system - humans, animals, plants.

This positive energy zone is acquired through the shape of the device, the material it is made of and the programmable element inside the sphere.



The principle of ECD in natural and created objects

The Energy Concentration Device (ECD) accumulates surrounding energy, transforms it and then transmits it back - creating a zone of high positive energy, which is more favourable for any living system - humans, animals, plants. This positive energy zone is acquired through the shape of the device.

This shape is frequently found in nature, such as in shapes of bird's eggs, bee hives and sea-shells. Humans have traditionally incorporated these shapes into architecture, and they can be found in the roofs of Buddhist temples, the "onion" domes of churches and church bells.

How the ECD made

The Energy Concentration Device is constructed using:

1. The principle of a three dimensional (harmonic) **spherical oscillator**, which is the main core of every living system.
2. The principle of the **Reich accumulator**, which is in the centre of the device (sphere). It works as a capacitor and has a programmable element inside. It is made of electric and dielectric mediums.
3. A pyramid shape, designed using the golden ratio.



The 'Star' Energy Concentration Device
The principle of the Star, which is manifested in Creation, helps us feel connected with the Universe, and encourages the process of spiritual development and scientific understanding of the world.



The basic principle of ECD

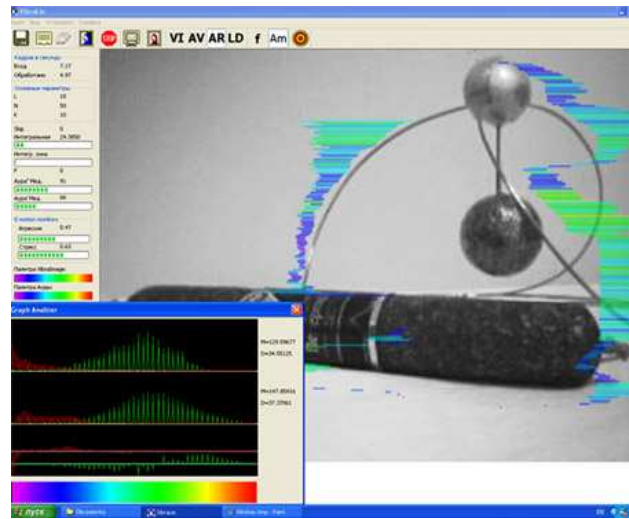
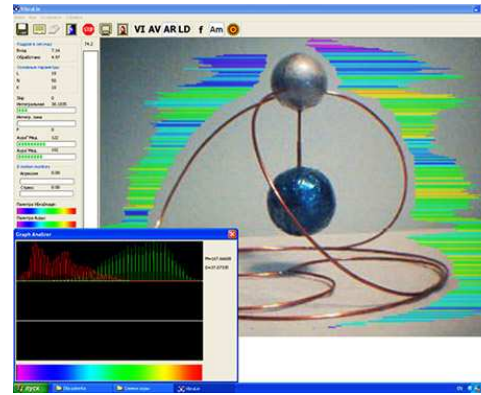
Processes and organisms require a level of energy to function with optimal efficiency – we call this a “resource” level of energy.

The ECD lifts the naturally occurring energy in the environment to the “resource” level.

The size and shape of the Energy Concentration Device is customisable and programmable to meet the needs of the environment after initial testing of the energy levels. Testing is carried out with the use of Aura-Vibraimage Technology.



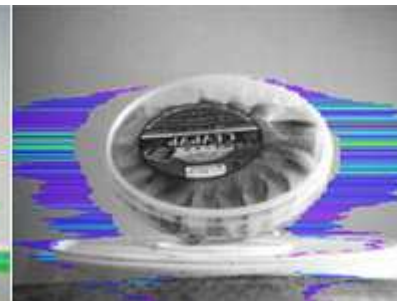
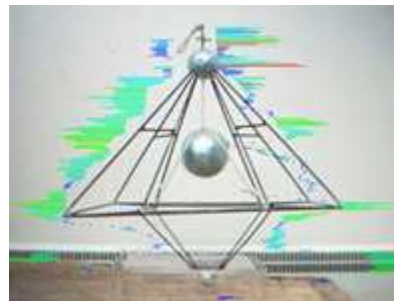
A vibraimage of the ECD and the results of its application to improve the health of human beings and the quality of products.



Aura-Vibraimage Technology

Aura-Vibraimage Technology allows us to measure the aura or energy vibration of a living system (person) or inanimate object. The vibraimage is the digital image of the aura, by which we can measure the amplitude and frequency of the energy vibration of a **given** subject. In the case of a person screened with Aura-Vibraimage Technology, the aura reflects the emotional and psycho-physiological state of that person. In the case of inanimate objects, the vibraimage measures its mechanical and optical microvibrations.

The effect of the ECD can be measured by how it restores the subject’s energy vibration (aura) to a normal or ideal state over time.

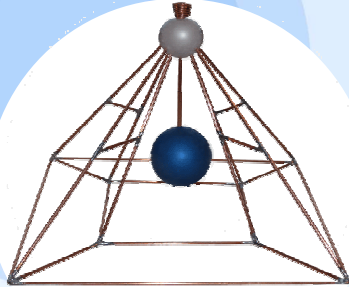


Areas of application

**Agriculture
Primary Producer
Farming**

**Oil Mining
and Production**

**Food Industry
Small Goods
Producers**



**Transport
and
Traffic Safety**

**Healthcare
Childcare
Education
Public places
Homes**

**Ecology and
Environmental
Protection**



Areas of application

Oil mining and production

Food industry

Small goods producers

Agriculture:

- primary producer farming
- fish farming
- animal breeding
- vegetable and flower farming

Transport and traffic safety

Healthcare:

- hospitals
- medical centres
- community health centres

Education, Childcare

At Home

Public Places:

- shopping centres
- offices and banks
- stadiums and theatres
- museums and galleries
- transport terminals and stations

Ecology and environmental protection

The Energy Concentrated Device

- ◆ Reduces oil viscosity
- ◆ Increases the power of a motor vehicle and decreases its toxicity
- ◆ Increases productivity of agricultural crops, animals and fish
- ◆ Extends storage time for food products; increases their quality and taste
- ◆ Reduces workplace accidents and stress level
- ◆ Eradicates rodents and insects on premises and production sites
- ◆ Creates comfortable energy on premises
- ◆ Harmonises natural time rhythms of living systems and human beings

Scientific testing of the ECD in many areas has proven its positive effect on human health, plants and animals as well as the environment in general.

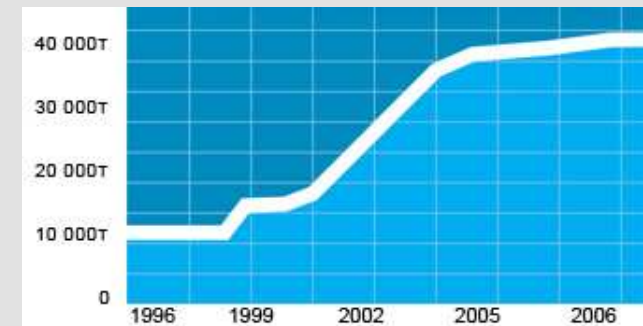


Case Study

The use of the ECD in the Klinsky Meat Processing and Packing Factory

“Since we started using the ECD in our factory, we have had no problems with pests on our premises. Our salami products received 27 gold medals at an international competition in Ecologically Clean and Safe Food Production.”

<http://www.klinskiy.ru/>



A graph of production figures at the Klinsky Meat Processing and Packing Factory 1996-2008 (in tonnes)



The benefits of using ECD

Small Goods Producers

The use of ECD on factory premises helps to:

- eliminate the presence of pests, such as mice, rats and insects
- keep the product safe in case of emergencies, e.g. - power failure
- improve the quality and taste of the product
- eliminate bad smells and pathogenic micro flora

The use of ECD helps to eradicate rodents and insects on any premises and production sites



Case Study

The use of ECD on the premises of a foods producer Niva (Zheleznogorsk, Russia)

The range of factories owned by Niva includes:

- a bakery (producing more than 100 different product codes)
- a meat deli producer
- cakes, torts and assembled desserts range
- salads (over 700 different product codes)
- outlet stores

During the time that the ECD was in use at Niva, the following changes were observed:

- a significant increase in the rate of production and sales
- an increase in the efficiency of labour
- an improvement in the quality and taste of the products

As a result, the company saw overall growth and progress in planning future directions.



The benefits of using ECD

Transport

The use of ECD in a car helps to:

- reduce fuel and energy consumption
- increase durability and efficiency of vehicle parts
- reduce greenhouse emissions/pollution
- improve awareness and wellbeing of driver and passengers

Oil refineries

The use of ECD in oil refineries reduces the viscosity of oil by 50%, which is beneficial for the mining, processing and transportation of oil.

Agriculture and Farming

The use of ECD increases the efficiency of the fish farming process by 5 to 6 times. This helps to reduce the harmful impacts of the fishing industry, such as overfishing in times of high demand.

The ECD increases fertility and health levels of animals, decreases mortality of livestock, young animals.



Case Study

The use of ECD on the Temruyk Fishing Factory (Azov Sea, Russian Federation)

The use of ECD on the Temruyk Fishing Factory has increased the efficiency of the fish farming process by 5 to 6 times. From 2002 the Temruyk Fishing Factory releases more than 5 millions of young fish every year into Azov Sea and Kuban River.



The Fact

The use of ECD increases the efficiency of the fish farming process by 5 to 6 times.

The benefits of using ECD

Healthcare

The use of ECD in hospitals, medical centres and community health centres :

- Reduces operational and post-operational mortality
- Reduces viscosity of blood, which helps to relieve painful leg cramps caused by poor circulation
- Normalises blood pressure
- Causes positive change in the immune system by stimulating the activity of leukocytes
- Reduces stress levels of health professionals and patients

Education, Childcare

The use of the ECD in childcare centres, schools and universities helps to:

- improve communication amongst the children/students
- reduce stress levels
- enhance learning processes
- improve concentration and organization skills
- improve overall wellbeing of teachers and students
- reduce absences due to illness



The effects of the ECD on human blood

Blood is one of the main indicators of human health. Blood consists of cellular elements (erythrocytes, leucocytes, platelets) and plasma with its physiological and pathogenic floras. The network of blood capillaries is broad and permeates all organs, tissues and cells of the body, for that reason it can reflect the conditions of most of the body's systems.

As a result of ECD application the following positive outcomes were recorded:

Improvement of blood rheology:

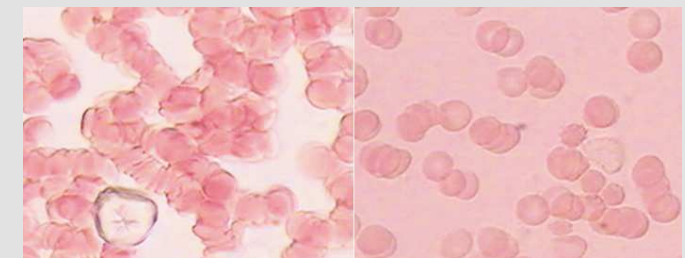
- reduction in blood viscosity
- reduction of erythrocytes aggregation

Positive changes in the immune system:

- Increase in size of leucocytes
- Increase in the activity of leucocytes

Improvement (increase) in lipid metabolism indicators:

- decrease in quantity and
- decrease in density of cholesterol crystals



An image of blood cells before and after the use of the ECD

The benefits of using ECD

At home

The use of the ECD in your home:

- reduces stress levels and improve communication between family members / housemates
- improves sleeping patterns
- improves the overall wellbeing of people, pets and plants
- improves memory
- improves the rhythms of cycles in living systems (e.g. menstrual cycle)
- eliminate pests, such as mice, rats, cockroaches, ants.

Public places

The use of the ECD in shopping centres, offices, banks, stadiums, theatres, museums, galleries, transport terminals and stations helps to:

- reduce stress levels
- reduce workplace accidents
- create a welcoming atmosphere
- improve the overall wellbeing of people working in the area and plants



The Advantages of the ECD

- ◆ Easy to install in any required area
- ◆ Works constantly; the period of operation is unlimited
- ◆ Does not interrupt any working process
- ◆ Does not require a power supply
- ◆ Walls or other obstacles do not hinder the work of ECD. This energy is easily transmitted through water, coolants and other liquids.
- ◆ Highly effective

All ECDs are patented inventions and are protected by copyright law. All devices are tested in laboratories and come with safety certificates. The ECD has won numerous gold medals and prizes at international innovation exhibitions.

Awards



NEW TECHNOLOGY

with proven effect in the scientific community and in practice

Patents and Diplomas



Contacts

To purchase the Energy Concentration Device (ECD) or to find out how the ECD can help you, please contact one of our representatives:

Australia

CANBERRA

Rinat Sabitov
+0415 266 058

ADELAIDE

Tamara Filatov
+ 0411 373 706

email

sufelcentre@gmail.com

websites

www.energycd.org (English)

www.vselishchev.ru (Russian)

